



VIEW 3D MODEL

© 2021 HOVER Inc. All rights reserved. This document and the images, measurement data, format and contents are the exclusive property of HOVER. HOVER is the registered trademark of Hover Inc. All other brands, products and company names mentioned herein may be trademarks or registered trademarks of their respective holders.

Use of this document is subject to HOVER's Terms of Use and is provided "as is." HOVER makes no warranties, representations or warranties of any kind, express or implied, arising by law or otherwise relating to this document or its contents or use, including but not limited to, quality, accuracy, completeness, reliability, or fitness for a particular purpose.

PROPERTY ID: 51566475
HOVER WAY
11 OCT 2021

Areas	Siding	Other
Facades	2575 ft ²	0 ft ²
Openings	536 ft ²	0 ft ²
Trims*	109 ft ²	0 ft ²
Unknown (no photos)*	18 ft ²	0 ft ²
Total	3238 ft²	0 ft²

*Any trim or unknown material that touches siding is included in the 'Siding' column. If it does not touch siding, then it's included in the 'Other' column.

Openings	Siding	Other
Quantity	26	0
Tops Length	92' 5"	-
Sills Length	72' 5"	-
Sides Length	246' 5"	-
Total Perimeter	411' 4"	-

Siding Waste Factor*	Area	Squares
Zero Waste	2710 ft ²	27¼
+10%	2989 ft ²	30
+18%	3200 ft ²	32¼
With Openings	3096 ft ²	31
Openings +10%	3413 ft ²	34¼
Openings +18%	3656 ft ²	36¾

*The first three rows of the Siding Waste Factor table are calculated using the total ft² of siding facades, ft² of trim touching siding, and ft² of unknowns touching siding.

Trim	Siding	Other
Level Starter	222'	11' 6"
Sloped Trim	94' 10"	-
Vertical Trim	21' 1"	9' 1"

Roofline	Length	Avg. Depth	Soffit Area
Eaves Fascia	180' 9"	-	-
Level Frieze Board	170' 6"	8"	128 ft ²
Rakes Fascia	198'	-	-
Sloped Frieze Board	158'	7"	96 ft ²

Corners	Siding	Other
Inside Qty	4	-
Inside Length	28' 3"	-
Outside Qty	15	-
Outside Length	115' 3"	-

Accessories	Siding	Other
Shutter Qty	0	0
Shutter Area	0 ft ²	0 ft ²
Vents Qty	0	0
Vents Area	0 ft ²	0 ft ²

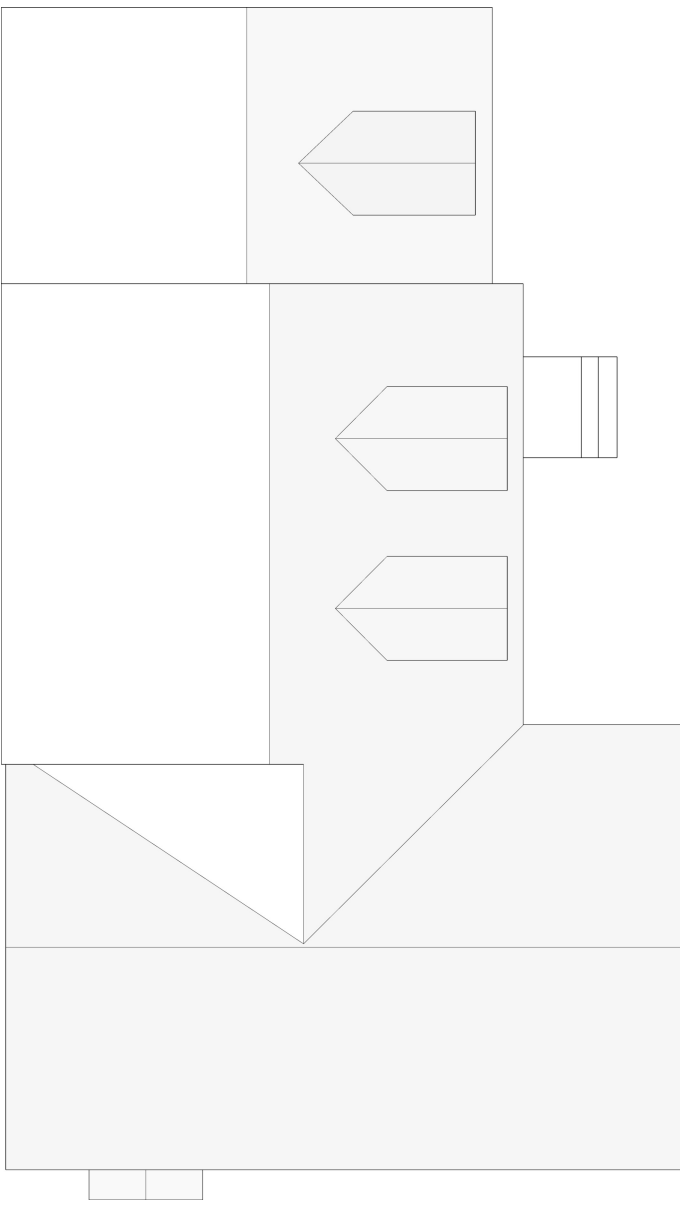


complete Measurements

456 Hover Way, Hollis, NH ROOF SUMMARY

Roof	Area	Total	Length
Roof Facets	2974 ft ²	15	-
Ridges / Hips	-	8	125' 2"
Valleys	-	8	75' 10"
Rakes	-	18	198'
Eaves	-	15	180' 9"
Flashing	-	9	14'
Step Flashing	-	21	112' 8"
Drip Edge/Perimeter	-	-	378' 9"

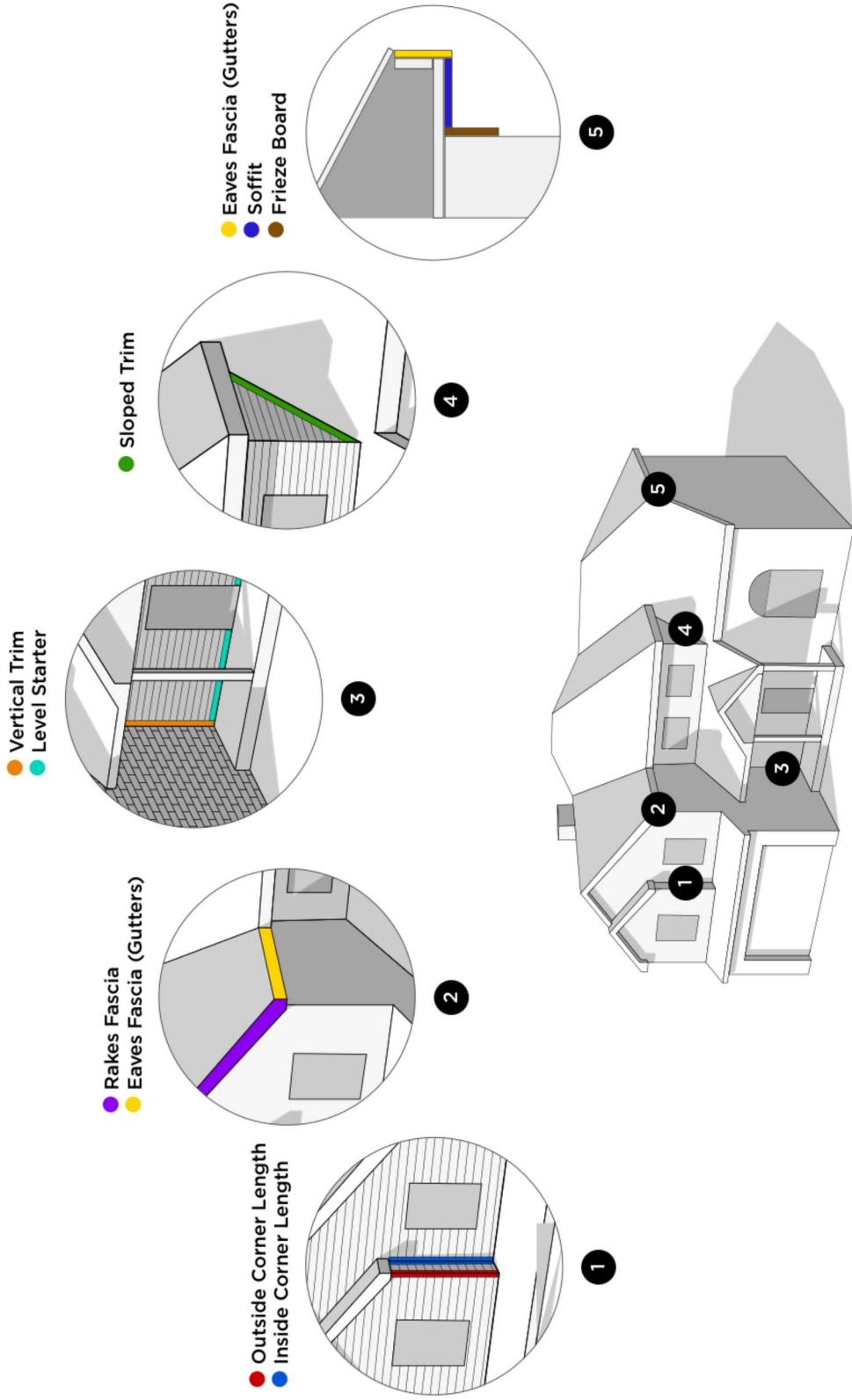
Roof Pitch	Area	Percentage
12/12	2168 ft ²	72.9%
5/12	457 ft ²	15.37%
4/12	239 ft ²	8.04%
8/12	110 ft ²	3.7%



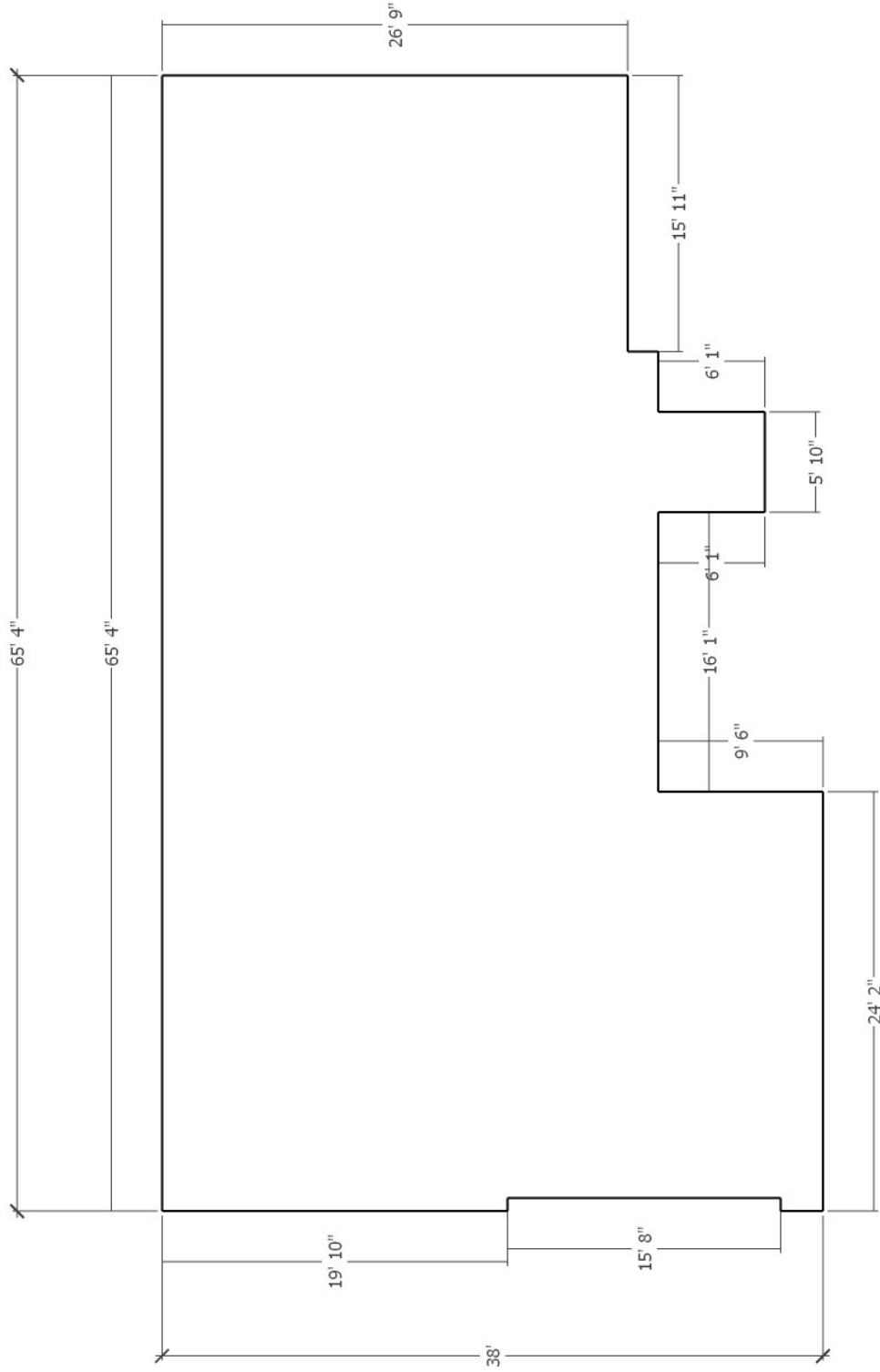
Waste Factor Calculation

	Zero Waste	+5%	+10%	+15%	+20%
Area	2974 ft ²	3123 ft ²	3271 ft ²	3420 ft ²	3569 ft ²
Squares	30	31 ¹ / ₃	33	34 ¹ / ₃	36

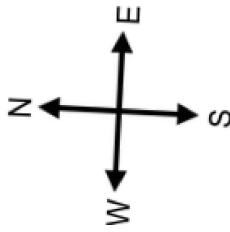
The table above provides the total roof area of a given property using waste percentages as noted. Please consider that area values and specific waste factors can be influenced by the size and complexity of the property, captured image quality, specific roofing techniques, and your own level of expertise. Additional square footage for Hip, Ridge, and Starter shingles are not included in this waste factor and will require additional materials.



BACK



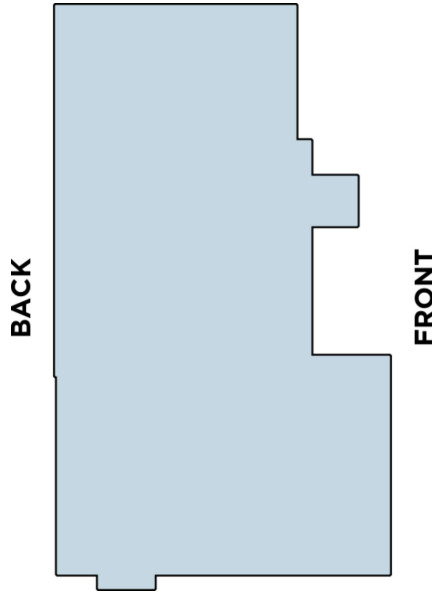
FRONT



Number of Stories: >1

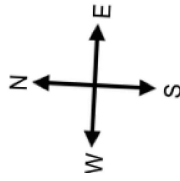
Footprint Perimeter: 220' 5"







Footprint Area: 2088 ft²

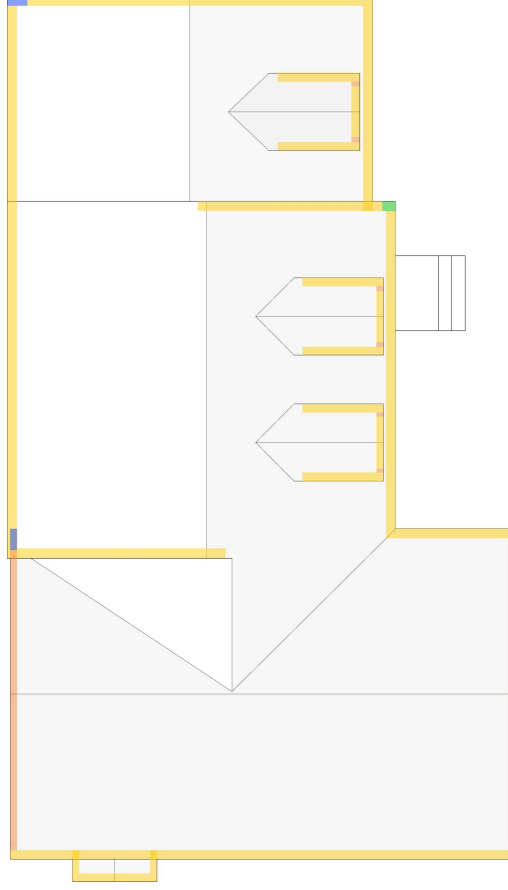


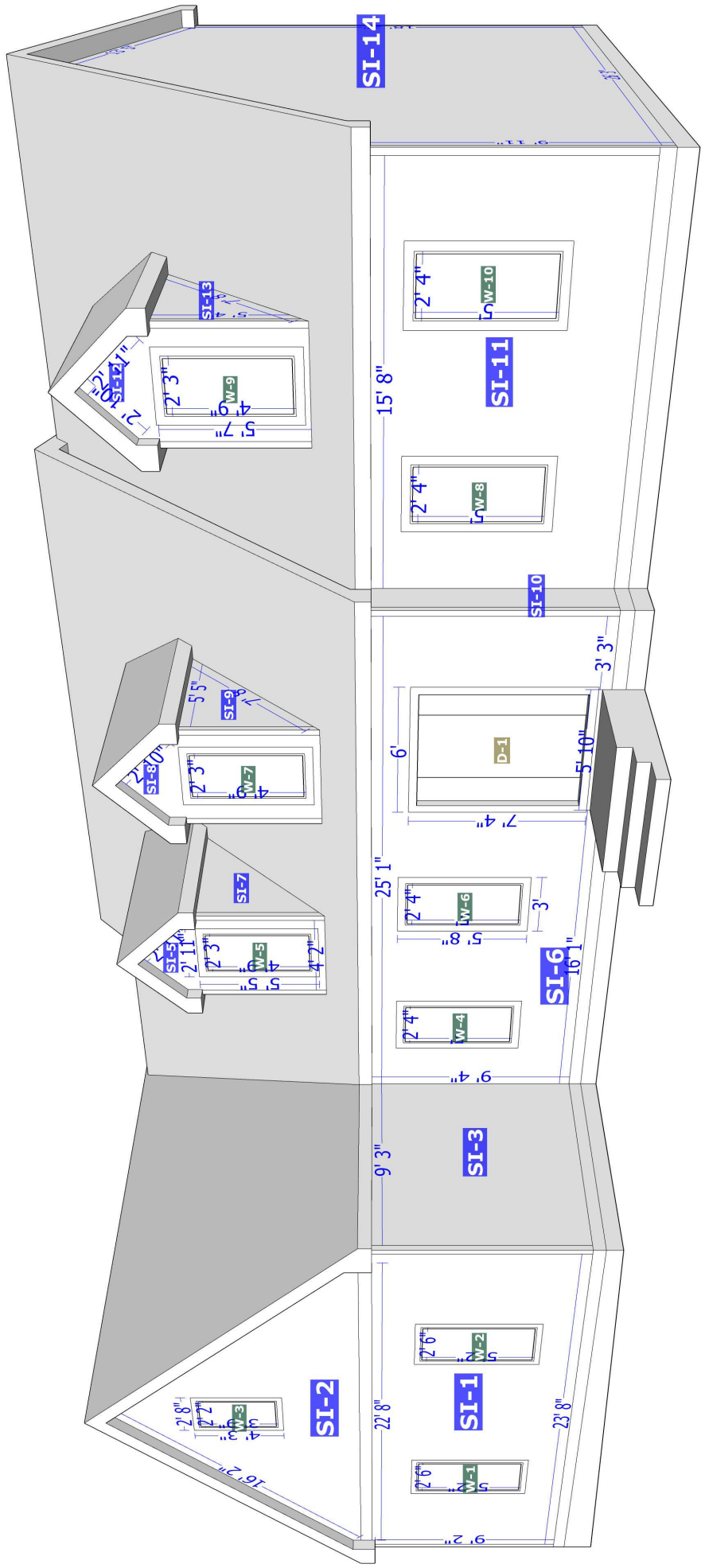
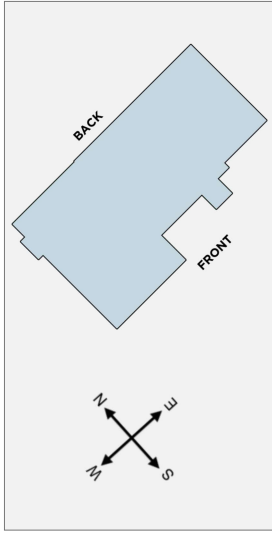
FRONT		RIGHT		LEFT		BACK	
SI-1	- 187 ft ²	SI-3	- 86 ft ²	SI-17	- 15 ft ²	SI-15	- 930 ft ²
SI-2	- 128 ft ²	SI-7	- 15 ft ²	SI-18	- 15 ft ²	SI-16	- 9 ft ²
SI-4	- 9 ft ²	SI-9	- 15 ft ²	SI-19	- 66 ft ²		
SI-5	- 15 ft ²	SI-10	- 28 ft ²	SI-20	- 15 ft ²		
SI-6	- 154 ft ²	SI-13	- 15 ft ²	SI-21	- 36 ft ²		
SI-8	- 15 ft ²	SI-14	- 499 ft ²	SI-22	- 196 ft ²		
SI-11	- 112 ft ²						
SI-12	- 15 ft ²						
635 ft²		658 ft²		343 ft²		939 ft²	

Number of Stories: >1



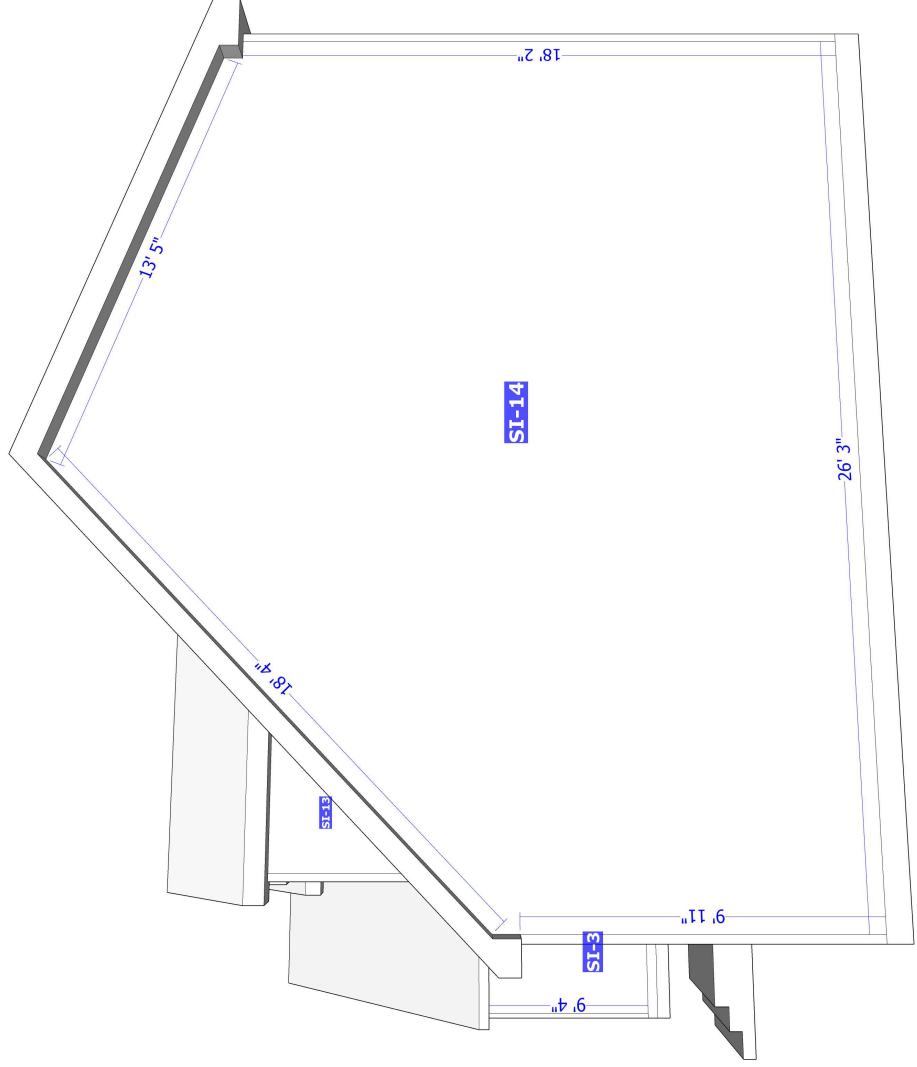
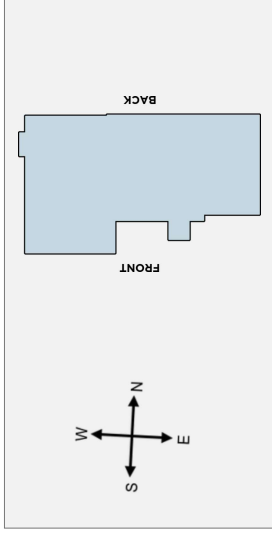
Type	Depth	# Facets	Total Length	Total Area
 eave	1" - 6"	7	4'	1 ft ²
 rake	1" - 6"	4	64' 2"	31 ft ²
 eave	6" - 12"	17	176' 5"	124 ft ²
 rake	6" - 12"	14	93' 10"	66 ft ²
 eave	12" - 18"	1	9"	1 ft ²
 eave	18" - 24"	2	1' 3"	2 ft ²
Totals			340' 4"	225 ft²





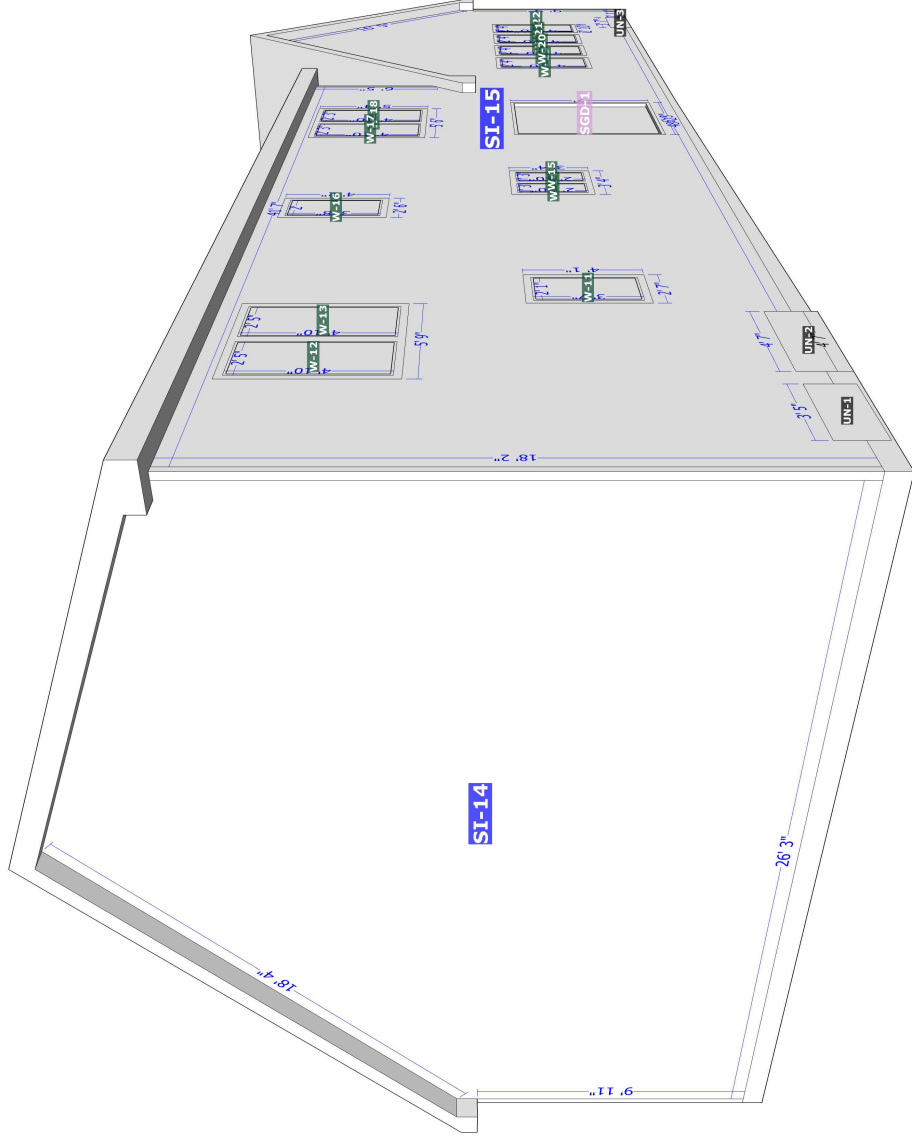
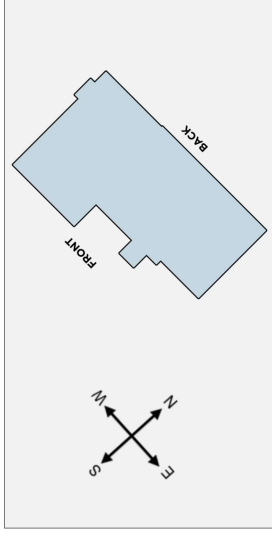
© 2021 HOVER Inc. All rights reserved. This document and the images, measurement data, format and contents are the exclusive property of HOVER. HOVER is the registered trademark of Hover Inc. All other brands, products and company names mentioned herein may be trademarks or registered trademarks of their respective holders.

Use of this document is subject to HOVER's Terms of Use and is provided "as is." HOVER makes no guarantees, representations or warranties of any kind, express or implied, arising by law or otherwise relating to this document or its contents or use, including but not limited to, quality, accuracy, completeness, reliability, or fitness for a particular purpose.

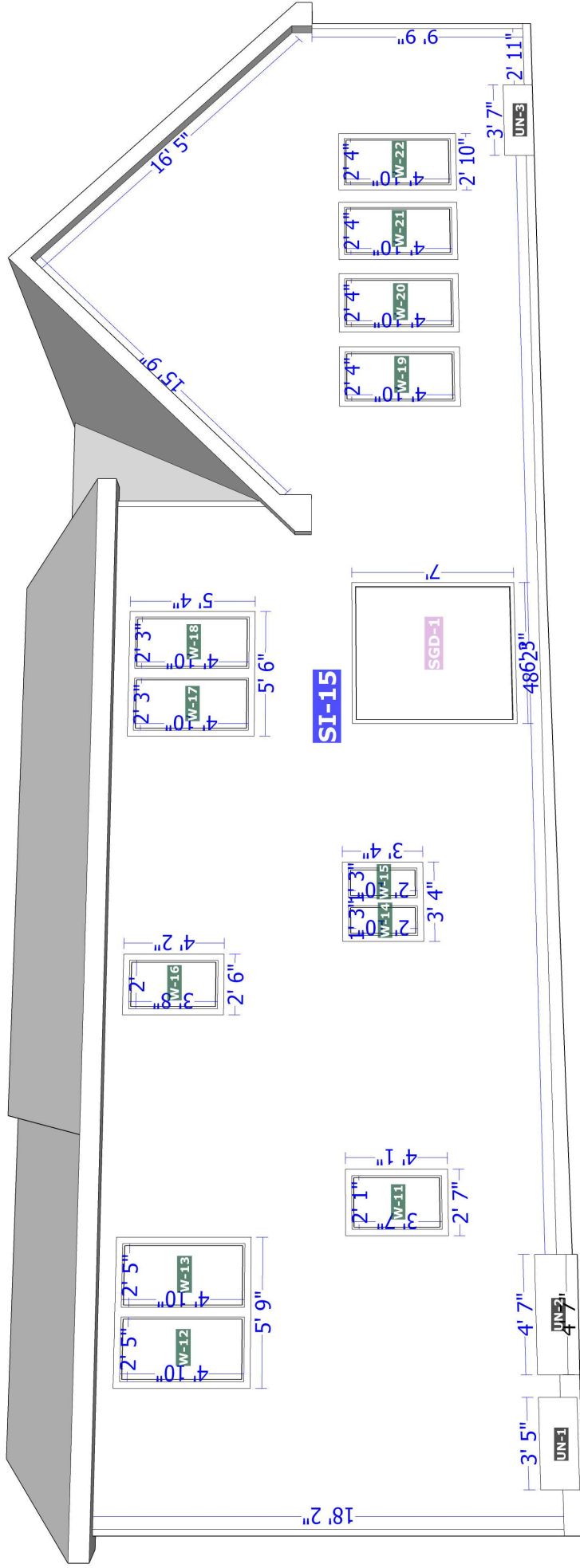
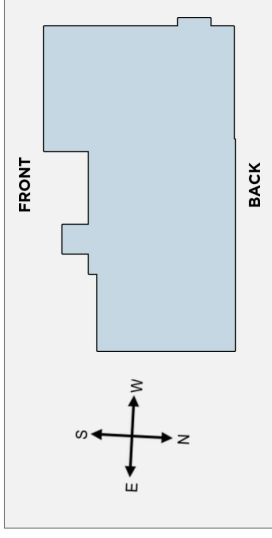


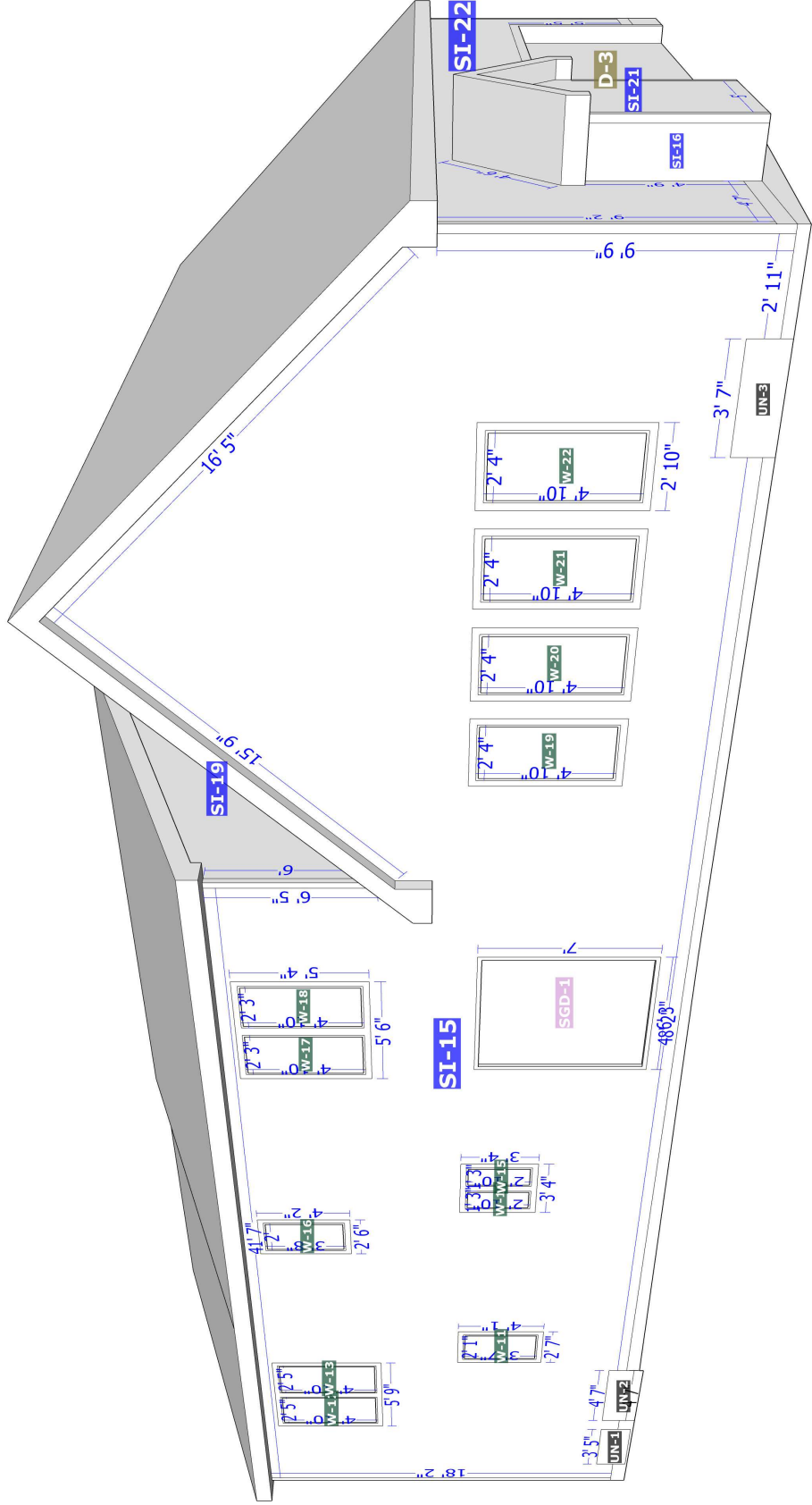
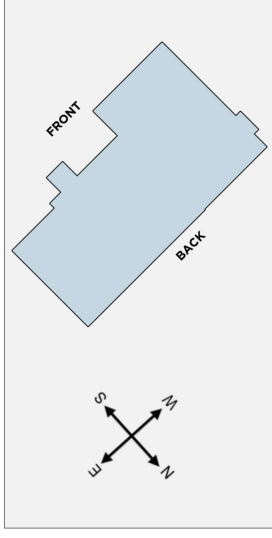
© 2021 HOVER Inc. All rights reserved. This document and the images, measurement data, format and contents are the exclusive property of HOVER. HOVER is the registered trademark of Hover Inc. All other brands, products and company names mentioned herein may be trademarks or registered trademarks of their respective holders.

Use of this document is subject to HOVER's Terms of Use and is provided "as is." HOVER makes no guarantees, representations or warranties of any kind, express or implied, arising by law or otherwise relating to this document or its contents or use, including but not limited to, quality, accuracy, completeness, reliability, or fitness for a particular purpose.



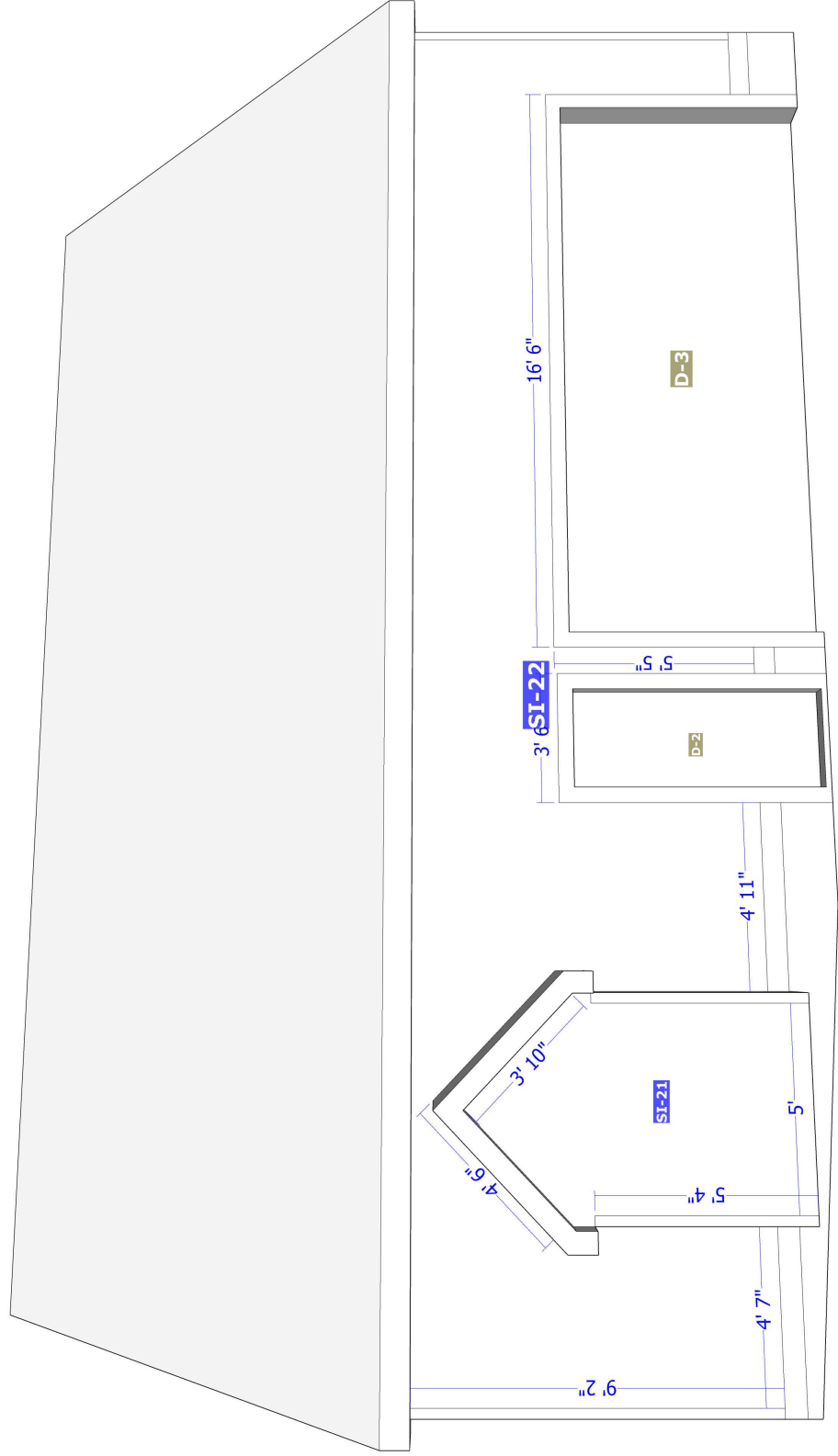
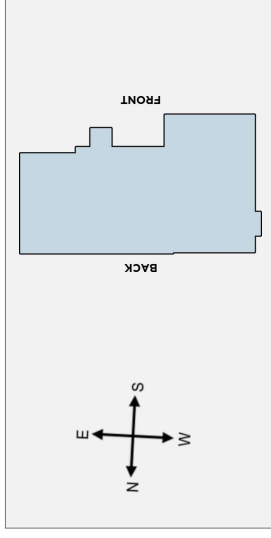
© 2021 HOVER Inc. All rights reserved. This document and the images, measurement data, format and contents are the exclusive property of HOVER. HOVER is the registered trademark of Hover Inc. All other brands, products and company names mentioned herein may be trademarks or registered trademarks of their respective holders.
Use of this document is subject to HOVER's Terms of Use and is provided "as is." HOVER makes no guarantees, representations or warranties of any kind, express or implied, arising by law or otherwise relating to this document or its contents or use, including but not limited to, quality, accuracy, completeness, reliability, or fitness for a particular purpose.

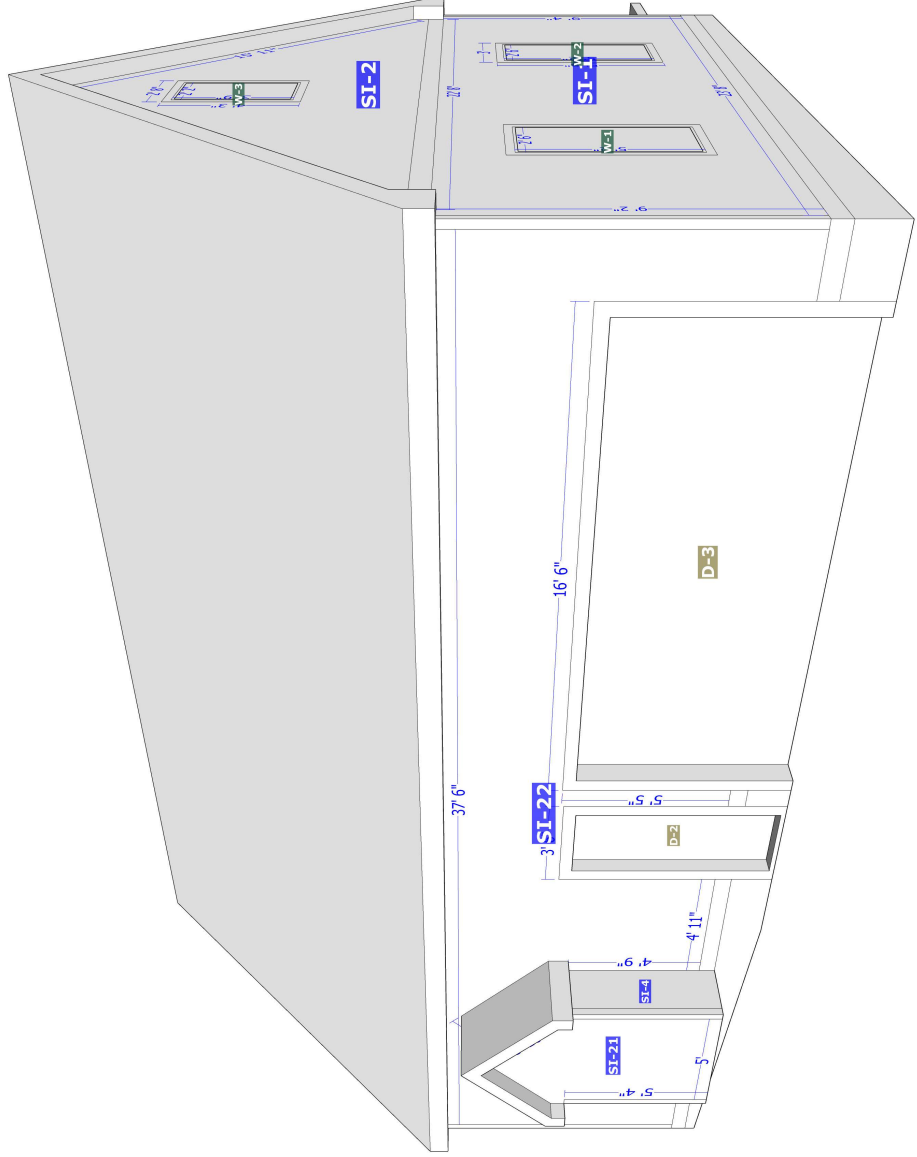
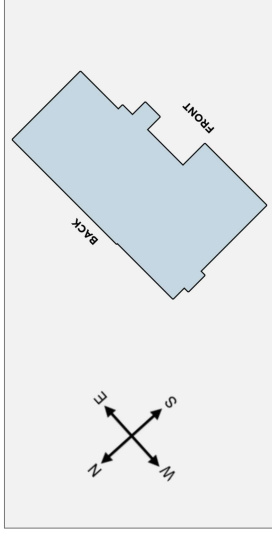




© 2021 HOVER Inc. All rights reserved. This document and the images, measurement data, format and contents are the exclusive property of HOVER. HOVER is the registered trademark of Hover Inc. All other brands, products and company names mentioned herein may be trademarks or registered trademarks of their respective holders.

Use of this document is subject to HOVER's Terms of Use and is provided "as is." HOVER makes no guarantees, representations or warranties of any kind, express or implied, arising by law or otherwise relating to this document or its contents or use, including but not limited to, quality, accuracy, completeness, reliability, or fitness for a particular purpose.





© 2021 HOVER Inc. All rights reserved. This document and the images, measurement data, format and contents are the exclusive property of HOVER. HOVER is the registered trademark of Hover Inc. All other brands, products and company names mentioned herein may be trademarks or registered trademarks of their respective holders.
Use of this document is subject to HOVER's Terms of Use and is provided "as is." HOVER makes no guarantees, representations or warranties of any kind, express or implied, arising by law or otherwise relating to this document or its contents or use, including but not limited to, quality, accuracy, completeness, reliability, or fitness for a particular purpose.



complete Measurements

456 Hover Way, Hollis, NH FACADES

Siding

Facade	Area	Inside Corners	Outside Corners	Openings	Shutters	Vents
SI-1	187 ft ²	0	2	2	0	0
SI-2	128 ft ²	0	0	1	0	0
SI-3	86 ft ²	1	1	0	0	0
SI-4	9 ft ²	1	1	0	0	0
SI-5	15 ft ²	0	2	1	0	0
SI-6	154 ft ²	1	1	3	0	0
SI-7	15 ft ²	0	1	0	0	0
SI-8	15 ft ²	0	2	1	0	0
SI-9	15 ft ²	0	1	0	0	0
SI-10	28 ft ²	1	1	0	0	0
SI-11	112 ft ²	1	1	2	0	0
SI-12	15 ft ²	0	2	1	0	0
SI-13	15 ft ²	0	1	0	0	0
SI-14	499 ft ²	0	2	0	0	0
SI-15	930 ft ²	0	3	13	0	0
SI-16	9 ft ²	1	1	0	0	0

© 2021 HOVER Inc. All rights reserved. This document and the images, measurement data, format and contents are the exclusive property of HOVER. HOVER is the registered trademark of Hover Inc. All other brands, products and company names mentioned herein may be trademarks or registered trademarks of their respective holders.

Use of this document is subject to HOVER's Terms of Use and is provided "as is." HOVER makes no guarantees, representations or warranties of any kind, express or implied, arising by law or otherwise relating to this document or its contents or use, including but not limited to, quality, accuracy, completeness, reliability, or fitness for a particular purpose.





complete Measurements

456 Hover Way, Hollis, NH

FACADES

Siding

Facade	Area	Inside Corners	Outside Corners	Openings	Shutters	Vents
SI-17	15 ft ²	0	1	0	0	0
SI-18	15 ft ²	0	1	0	0	0
SI-19	66 ft ²	0	1	0	0	0
SI-20	15 ft ²	0	1	0	0	0
SI-21	36 ft ²	0	2	0	0	0
SI-22	196 ft ²	2	2	2	0	0
Total	2575 ft²	8	30	26	0	0

Unknown (missing photos)

Facade	Area	Openings	Shutters	Vents
UN-1	5 ft ²	0	0	0
UN-2	8 ft ²	0	0	0
UN-3	5 ft ²	0	0	0
Total	18 ft²	0	0	0



Complete Measurements

456 Hover Way, Hollis, NH SIDING

Facades

Facade	Area	Trim			Corners		Roofline		Openings		
		Level Starter	Sloped	Vertical	Inside	Outside	Level Frieze Board	Sloped Frieze Board	Tops	Sills	Sides
		SI-1	187 ft ²	23' 8"	-	2"	-	18' 6"	1'	-	6'
SI-2	128 ft ²	22' 8"	-	1'	-	-	-	32'	2' 8"	2' 8"	8' 6"
SI-3	86 ft ²	9' 3"	-	-	9' 4"	9' 4"	9' 3"	-	-	-	-
SI-4	9 ft ²	1' 7"	-	7"	4' 9"	5' 4"	1' 7"	-	-	-	-
SI-5	15 ft ²	4' 2"	-	1' 4"	-	11' 4"	1"	5' 9"	2' 11"	2' 11"	10' 11"
SI-6	154 ft ²	25' 1"	-	9"	9' 4"	9' 4"	25' 1"	-	12'	12'	37' 3"
SI-7	15 ft ²	-	7' 8"	-	-	5' 8"	5' 5"	-	-	-	-
SI-8	15 ft ²	4' 2"	-	1' 5"	-	11' 4"	2"	5' 8"	2' 11"	2' 11"	10' 11"
SI-9	15 ft ²	-	7' 8"	-	-	5' 8"	5' 5"	-	-	-	-
SI-10	28 ft ²	1' 6"	18' 11"	1' 5"	9' 4"	9' 4"	9"	19' 9"	-	-	-
SI-11	112 ft ²	15' 8"	-	-	9' 4"	9' 4"	15' 8"	-	6'	6'	22' 8"
SI-12	15 ft ²	4' 2"	-	1' 6"	-	11' 2"	2"	5' 8"	2' 11"	2' 11"	10' 11"
SI-13	15 ft ²	-	7' 8"	-	-	5' 7"	5' 5"	-	-	-	-
SI-14	499 ft ²	26' 3"	-	1' 4"	-	27' 6"	7"	31' 9"	-	-	-
SI-15	930 ft ²	64' 10"	1' 10"	8' 5"	-	33' 6"	43' 5"	32' 2"	37' 1"	37' 1"	101' 4"

*Totals de-duplicate any line segments that are shared between multiple facades, and as a result may not represent a total summation of the corresponding column.



complete Measurements

456 Hover Way, Hollis, NH SIDING

Facades

Facade	Area	Trim			Corners		Roofline		Openings		
		Level Starter	Sloped	Vertical	Inside	Outside	Level Frieze Board	Sloped Frieze Board	Tops	Sills	Sides
SI-16	9 ft ²	1' 7"	-	7"	4' 9"	5' 4"	1' 7"	-	-	-	-
SI-17	15 ft ²	-	7' 8"	-	-	5' 7"	5' 5"	-	-	-	-
SI-18	15 ft ²	-	7' 8"	-	-	5' 8"	5' 5"	-	-	-	-
SI-19	66 ft ²	-	19' 1"	5"	-	6' 2"	-	17' 7"	-	-	-
SI-20	15 ft ²	-	7' 8"	-	-	5' 8"	5' 5"	-	-	-	-
SI-21	36 ft ²	5' 6"	-	1'	-	10' 8"	-	7' 7"	-	-	-
SI-22	196 ft ²	12'	9' 1"	1' 5"	9' 7"	18' 5"	38' 6"	-	20'	-	21' 5"
Total*	2575 ft ²	222'	94' 10"	21' 1"	28' 3"	115' 3"	170' 6"	158'	92' 5"	72' 5"	246' 5"

*Totals de-duplicate any line segments that are shared between multiple facades, and as a result may not represent a total summation of the corresponding column.



Complete Measurements

456 Hover Way, Hollis, NH SIDING

Waste Factor Calculation

Facade	Zero Waste	+10%	+18%	With Openings	Openings +10%	Openings +18%
SI-1	187 ft ²	206 ft ²	221 ft ²	213 ft ²	234 ft ²	251 ft ²
SI-2	128 ft ²	141 ft ²	151 ft ²	136 ft ²	150 ft ²	160 ft ²
SI-3	86 ft ²	95 ft ²	101 ft ²	86 ft ²	95 ft ²	101 ft ²
SI-4	9 ft ²	10 ft ²	11 ft ²	9 ft ²	10 ft ²	11 ft ²
SI-5	15 ft ²	17 ft ²	18 ft ²	26 ft ²	29 ft ²	31 ft ²
SI-6	154 ft ²	169 ft ²	182 ft ²	198 ft ²	218 ft ²	234 ft ²
SI-7	15 ft ²	17 ft ²	18 ft ²	15 ft ²	17 ft ²	18 ft ²
SI-8	15 ft ²	17 ft ²	18 ft ²	26 ft ²	29 ft ²	31 ft ²
SI-9	15 ft ²	17 ft ²	18 ft ²	15 ft ²	17 ft ²	18 ft ²
SI-10	28 ft ²	31 ft ²	33 ft ²	28 ft ²	31 ft ²	33 ft ²
SI-11	112 ft ²	123 ft ²	132 ft ²	136 ft ²	150 ft ²	160 ft ²
SI-12	15 ft ²	17 ft ²	18 ft ²	26 ft ²	29 ft ²	31 ft ²
SI-13	15 ft ²	17 ft ²	18 ft ²	15 ft ²	17 ft ²	18 ft ²
SI-14	499 ft ²	549 ft ²	589 ft ²	499 ft ²	549 ft ²	589 ft ²
SI-15	930 ft ²	1023 ft ²	1097 ft ²	1042 ft ²	1146 ft ²	1230 ft ²

*The first three rows of the Siding Waste Factor table are calculated using the total ft² of siding facades, ft² of trim touching siding, and ft² of unknowns touching siding.

Waste Factor Calculation

Facade	Zero Waste	+10%	+18%	With Openings	Openings +10%	Openings +18%
SI-16	9 ft ²	10 ft ²	11 ft ²	9 ft ²	10 ft ²	11 ft ²
SI-17	15 ft ²	17 ft ²	18 ft ²	15 ft ²	17 ft ²	18 ft ²
SI-18	15 ft ²	17 ft ²	18 ft ²	15 ft ²	17 ft ²	18 ft ²
SI-19	66 ft ²	73 ft ²	78 ft ²	66 ft ²	73 ft ²	78 ft ²
SI-20	15 ft ²	17 ft ²	18 ft ²	15 ft ²	17 ft ²	18 ft ²
SI-21	36 ft ²	40 ft ²	42 ft ²	36 ft ²	40 ft ²	42 ft ²
SI-22	196 ft ²	216 ft ²	231 ft ²	214 ft ²	235 ft ²	253 ft ²
UN-1	5 ft ²	6 ft ²	6 ft ²	5 ft ²	6 ft ²	6 ft ²
UN-2	8 ft ²	9 ft ²	9 ft ²	8 ft ²	9 ft ²	9 ft ²
UN-3	5 ft ²	6 ft ²	6 ft ²	5 ft ²	6 ft ²	6 ft ²
Trims	117 ft ²	129 ft ²	138 ft ²	238 ft ²	262 ft ²	281 ft ²
Total	2710 ft²	2989 ft²	3200 ft²	3096 ft²	3413 ft²	3656 ft²

*The first three rows of the Siding Waste Factor table are calculated using the total ft² of siding facades, ft² of trim touching siding, and ft² of unknowns touching siding. The table above provides the area of siding on a given property, segmented by individual and in sum total form. Values include openings (doors & windows) and waste percentages as noted. Please consider that area values and specific waste factors can be influenced by the size and complexity of the property, captured image quality, specific siding techniques, and your own level of expertise. Accessories are not included in these values and may require additional material.



Complete Measurements

456 Hover Way, Hollis, NH OPENINGS

Windows

Opening	Width x Height	United Inches	Area
W-1	30" x 62"	92"	13 ft ²
W-2	30" x 62"	92"	13 ft ²
W-3	26" x 45"	71"	8 ft ²
W-4	28" x 60"	88"	12 ft ²
W-5	27" x 57"	84"	11 ft ²
W-6	28" x 60"	88"	12 ft ²
W-7	27" x 57"	84"	11 ft ²
W-8	28" x 60"	88"	12 ft ²
W-9	27" x 57"	84"	11 ft ²
W-10	28" x 60"	88"	12 ft ²
W-11	25" x 43"	68"	7 ft ²
W-12	29" x 58"	88"	12 ft ²
W-13	29" x 58"	88"	12 ft ²
W-14	15" x 34"	49"	4 ft ²
W-15	15" x 34"	49"	4 ft ²
W-16	24" x 44"	67"	7 ft ²
W-17	27" x 58"	86"	11 ft ²

Doors

Opening	Width x Height	Area
D-1	36" x 80"	20 ft ²
D-2	32" x 80"	18 ft ²
D-3	192" x 84"	112 ft ²
D-3 Entire	188" x 83"	108 ft ²
SGD-1	72" x 80"	40 ft ²
Total	-	186 ft ²

***Total door square footage includes entire door package (e.g. with transoms, sidelites, etc.)**

© 2021 HOVER Inc. All rights reserved. This document and the images, measurement data, format and contents are the exclusive property of HOVER. HOVER is the registered trademark of Hover Inc. All other brands, products and company names mentioned herein may be trademarks or registered trademarks of their respective holders.

Use of this document is subject to HOVER's Terms of Use and is provided "as is." HOVER makes no guarantees, representations or warranties of any kind, express or implied, arising by law or otherwise relating to this document or its contents or use, including but not limited to, quality, accuracy, completeness, reliability, or fitness for a particular purpose.



complete Measurements

456 Hover Way, Hollis, NH
OPENINGS

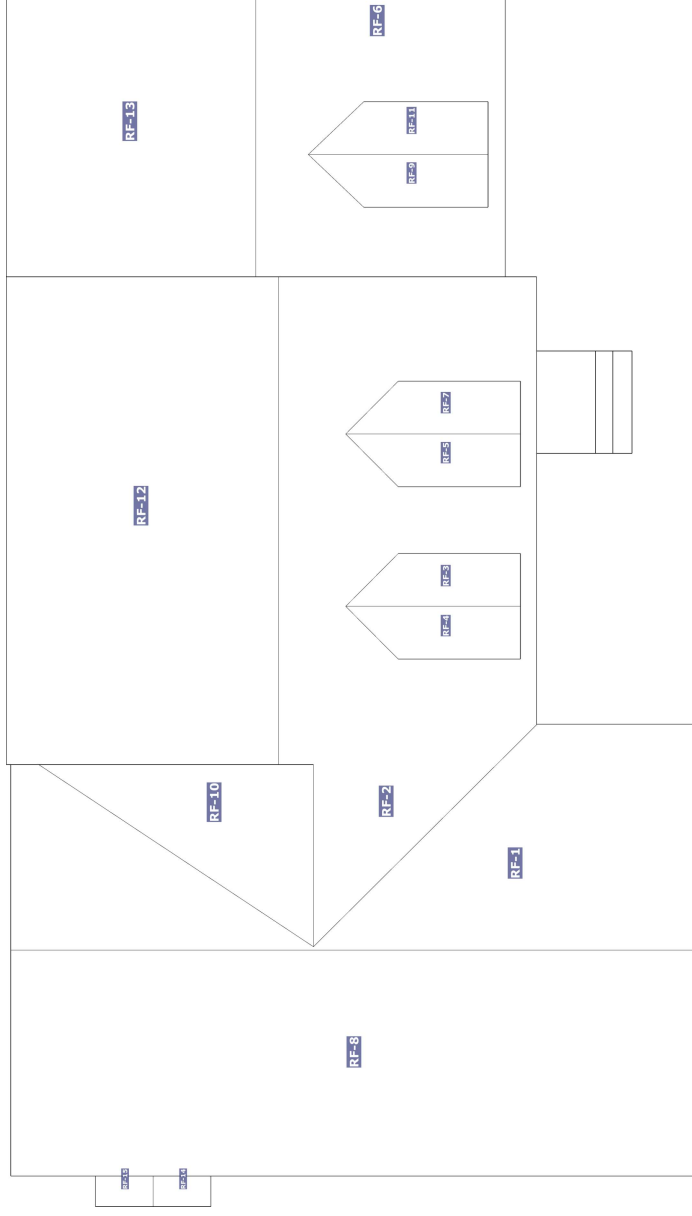
Windows (cont.)

Opening	Width x Height	United Inches	Area
W-18	27" x 58"	86"	11 ft ²
W-19	28" x 58"	86"	11 ft ²
W-20	28" x 58"	86"	11 ft ²
W-21	28" x 58"	86"	11 ft ²
W-22	28" x 58"	86"	11 ft ²
Total	-	1782"	227 ft ²

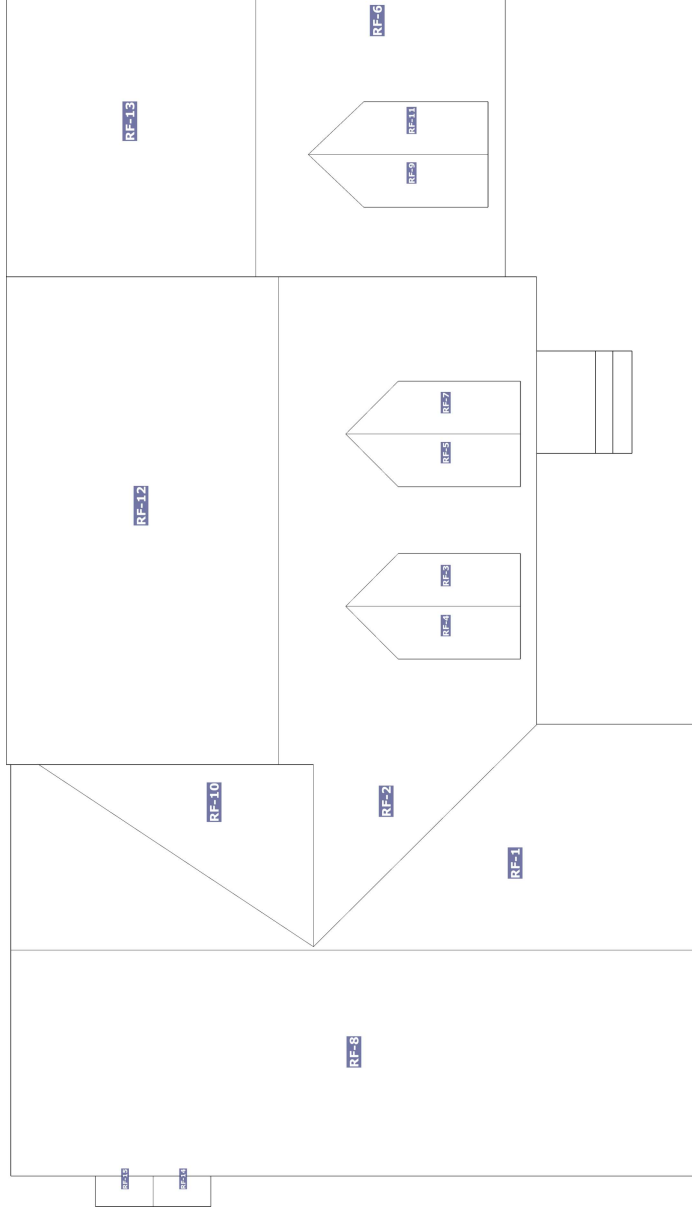
© 2021 HOVER Inc. All rights reserved. This document and the images, measurement data, format and contents are the exclusive property of HOVER. HOVER is the registered trademark of Hover Inc. All other brands, products and company names mentioned herein may be trademarks or registered trademarks of their respective holders.

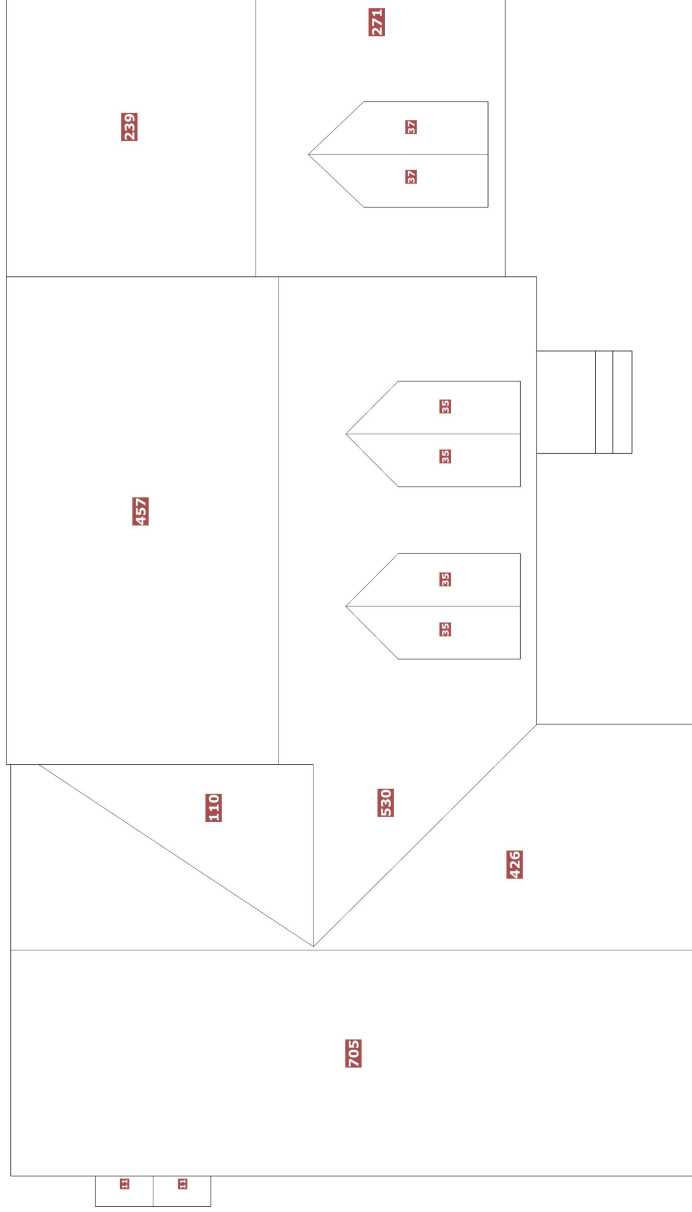
Use of this document is subject to HOVER's Terms of Use and is provided "as is." HOVER makes no guarantees, representations or warranties of any kind, express or implied, arising by law or otherwise relating to this document or its contents or use, including but not limited to, quality, accuracy, completeness, reliability, or fitness for a particular purpose.

Facet	Area	Pitch
RF-1	426 ft ²	12/12
RF-2	530 ft ²	12/12
RF-3	35 ft ²	12/12
RF-4	35 ft ²	12/12
RF-5	35 ft ²	12/12
RF-6	271 ft ²	12/12
RF-7	35 ft ²	12/12
RF-8	705 ft ²	12/12
RF-9	37 ft ²	12/12
RF-10	110 ft ²	8/12
RF-11	37 ft ²	12/12
RF-12	457 ft ²	5/12

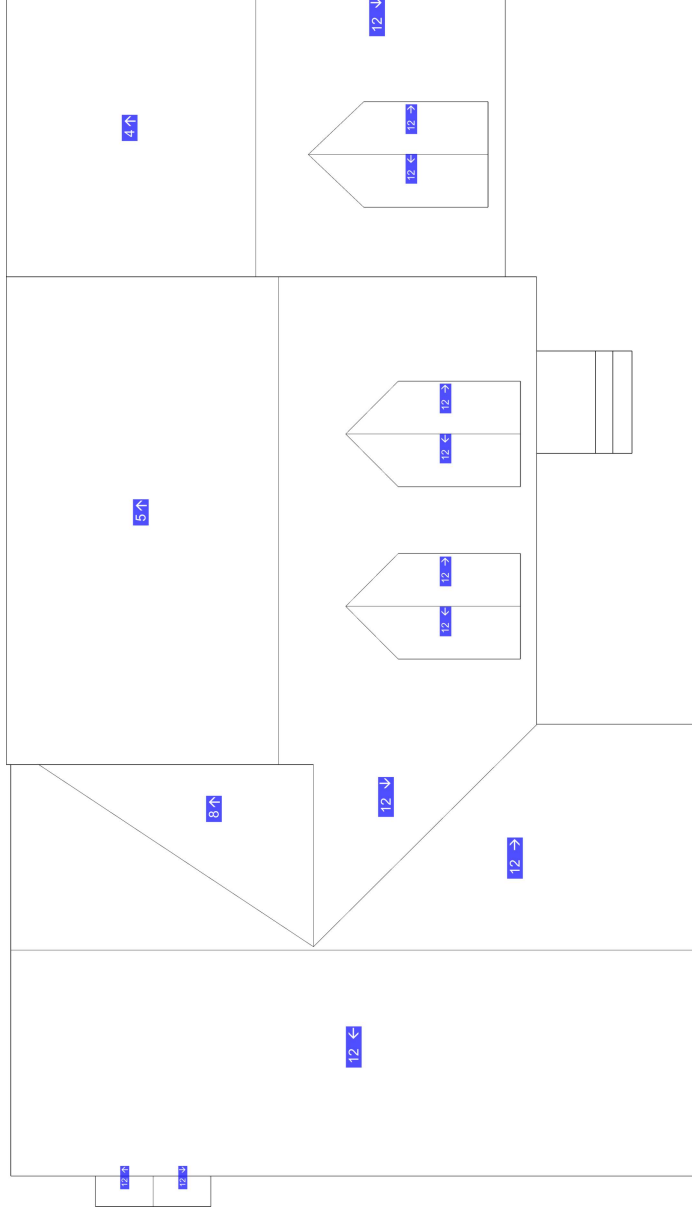


Facet	Area	Pitch
RF-13	239 ft ²	4/12
RF-14	11 ft ²	12/12
RF-15	11 ft ²	12/12





Roof	Facets	Total
Total	15	2974 ft ²



Roof Pitch	Area	Percentage
12/12	2168 ft ²	72.9%
5/12	457 ft ²	15.37%
4/12	239 ft ²	8.04%
8/12	110 ft ²	3.7%



© 2021 HOVER Inc. All rights reserved. This document and the images, measurement data, format and contents are the exclusive property of HOVER. HOVER is the registered trademark of Hover Inc. All other brands, products and company names mentioned herein may be trademarks or registered trademarks of their respective holders.

Use of this document is subject to HOVER's Terms of Use and is provided "as is." HOVER makes no guarantees, representations or warranties of any kind, express or implied, arising by law or otherwise relating to this document or its contents or use, including but not limited to, quality, accuracy, completeness, reliability, or fitness for a particular purpose.

PROPERTY ID: 51566475
HOVER WAY

11 OCT 2021

Page 30



© 2021 HOVER Inc. All rights reserved. This document and the images, measurement data, format and contents are the exclusive property of HOVER. HOVER is the registered trademark of Hover Inc. All other brands, products and company names mentioned herein may be trademarks or registered trademarks of their respective holders.

Use of this document is subject to HOVER's Terms of Use and is provided "as is." HOVER makes no guarantees, representations or warranties of any kind, express or implied, arising by law or otherwise relating to this document or its contents or use, including but not limited to, quality, accuracy, completeness, reliability, or fitness for a particular purpose.